



Oriole Park Elementary School

1420-40th Street SW, Wyoming, MI 49509

Absence Hotline: (616) 249-7698

Phone: (616) 530-7558

Fax: (616) 249-7624

Informer

“Oriole Park students will lead the way!”

April 16, 2012

Principally Speaking...

Our Walk-A-Thon is right around the corner! This year our theme is “walking on sunshine.” The Oriole Park fundraising committee has been working hard on this event and we are sure it will be a success. It is a great way to raise money for the PTO so that we can continue to provide enriching opportunities for our students. Not only is this an event that will raise money, but it is also a wonderful way to incorporate physical activity into the day for our students. The PTO needs volunteers to help support this event, so if you are interested in volunteering, please call the school office by Wednesday, April 18.

Don't forget to turn in pledges and please remind you child(ren) to wear his/her Oriole Park shirt and comfortable clothes on Friday. Let's keep our fingers crossed for good weather! :)



Spring Carnival



May 4th - May 13th

Monday-Thursday, 4-10 pm * Friday, 4-11 pm

Saturday, Noon-11 pm * Sunday, 1 pm -10 pm

Held in the south parking lot of the old *Studio 28*
1400 - 28th St. SW, Wyoming

Bring in this coupon to receive:

***\$3 OFF THE PRICE OF AN UNLIMITED RIDE WRISTBAND**

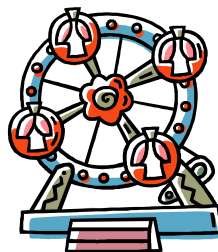
Fundraising Carnival for: Sleeping Stones Program and Greater Wyoming Community Resources Alliance

Good thru 5/13/12

Sponsored by the City of Wyoming Parks and Recreation with the generous support of Playworld Unlimited and Look's Theatres.

Contact Wyoming Parks and Recreation Department at 616-530-3164 with any questions or if you would like additional coupons for the wristbands.

More passes available in the office!!



“Riding the Rapid”

If you often ride the Grand Rapids city bus, parents must pay bus fare for children over 42” tall. Students (Kindergarten – College) are eligible to receive student discounted bus fare when a student i.d. card is presented. If you need your child’s student i.d. card for this purpose, please feel free to call the office and request this.

Jennifer Debski, Principal

Terri Finkbeiner, Secretary

P.T.O. NEWS

Hello Oriole Park Families!
It is Walk-A-Thon week! Yahoo! We need to make our goal, so if your student has not met/surpassed the \$30 goal, please encourage them to do so. Thank -you very much.

We need volunteers for the Walk-A-Thon to punch cards for students laps, hand out water and snacks, set-up the course and tear down the course. We need help from 9am-11:30am and then again from 1:30-3:30pm. If you can help, please let the school know or you can put it on the Facebook parent page. In addition, we encourage this to be a family event. If you would like to walk with your student, please feel free to join us.

Thursday, 4/19/12, is Mornings with Moms. Hope to see you at 8:00 for some delicious donuts. If possible, stay after school starts and have coffee with other Moms.

Have a great week and hope to see you all!

UPCOMING EVENTS

April 18

Kd. Registration at
Huntington Woods ECC
11:30-6:30pm

April 19

Muffins with Moms
8:00am

April 20

Walk-A-Thon April 23
(rain date)

April 23

Kd. and 1/2 Music
Program at Wyoming
Park High School 7pm

May 9

3/4 class to Saugatuck
(R. Swanson, K Swanson)

May 11

3/4 class to Saugatuck
(Vanderbeek, Adams)

May 15

1-2 classes to Frederick
Meijer Gardens

May 16

Safety Celebration
12:30

May 17

Donuts with Dads
8:00am

May 23

Field Day (May 24 rain
date)

May 25 & 28

**No School Memorial
Day Break**

May 29

3-4 classes to Frederick
Meijer Gardens

May 29-31

BOGO Book Fair

May 30 & 31

**Half Day dismissal at
12:15pm PM Kd.
Students meet with AM**

May 31

**LAST DAY of School
Performing Arts Show**

Two incredible area camps are already preparing for big summer fun in 2012 – *and making sure that everyone can afford it!*

Throughout the summer, **Camp Blodgett** and **Camp O'Malley** will serve hundreds of children at our residential summer camp programs. All camp fees are based on a sliding scale. The sliding scale takes in to consideration family size and income and makes camp an affordable option for families (*as low as \$35 per camper for an entire session-meals and transportation included!*). In addition, Camp Blodgett offers Good Student Discounts of up to \$25. Both camps have \$5 early registration discounts.

Please go to the camp websites at www.campblodgett.org and www.campomalley.org to download registration forms, or contact Heidi Workman at Oriole Park (616) 530-7558

Scrapbooking

April 28th - Crop for a Cure
Fundraiser and Vendor Event
9am - 6pm at West Elementary

Come Join the fun and help raise money for this year's Relay For Life
Call 616-531-8693 to register for the Crop or stop by between 12 and 3 for the Vendors



Pampered Chef
Tastefully Simple
Mary Kay
Thirty-One
Creative Memories